



Channels

PRIZES
PAGE 7

May – June 2010

4170
Stream Teams
Strong!

Information for and about Missouri Stream Teams

INSIDE THIS ISSUE

- 2 Float to Win!
Tips from the Teams
Seeking More VWQM
Level 3s!
- 3 Team Snapshots
Riffle Review
- 4 Team Calendar
Teams in Action
- 5 Activity Report
- 7 Change in Quarterly
Prize Announcements
Activity Prize Winners
- 8 Can You Help?

Team 4037 Has Momentum & Walmart Is There With Them!

By Andrew Branson, Stream Team Biologist

Since forming in July 2009, Marisa Franklin and her Team of almost 40 members, the Walmart STaRs (Support, Testing, and Reclamation) Warehouse Complex in Jane, Missouri, have been flowing right along! They have adopted many streams in McDonald County, and have already completed several cleanups. They are very enthusiastic and are making a difference in their southwest corner of the state.

While helping Missouri's streams, Marisa has also helped the Stream Team Program by taking full advantage of a program Walmart offers its employees called Volunteerism Always Pays (VAP). This program encourages Walmart associates to get involved in charitable organizations that matter to their families and the communities where they live and work. Through VAP, associates may request charitable



Stream Team Assistant Carl Romesburg accepts a check from Stream Team 4037. Congrats to all for job well done!

contributions on behalf of eligible organizations where they volunteer.

Since 1995 when VAP began, Walmart associates have volunteered more than 7 million hours. In 2008 alone, the associates in the U.S. volunteered more than 1 million hours with more than 10,000 local and national charitable organizations. In turn, the Walmart Foundation contributed more than \$8 million in matching donations to these charities.

In August 2009, the Walmart Foundation issued a challenge to its stores across the nation to volunteer in their local communities, and Teams like Marisa's answered that call! The Walmart STaRs Warehouse Complex started

See "Walmart" continued on page 8.



Walmart STaRs include: Marisa Franklin, Will Larkin, Michelle Sanchez, Stacy Steiner, Angela Cawood, Laura Fultz, Jonathan Pickett, Bobby Ortiz, Russell Patterson, Crystal Cole, Vicky Rock, Lisa Wooten, Connie Pullen, JC Brown, Laura Blumenstein, Laura Kesel, Lisa Davis, Roger Fox, Thomas Ates, Trent Riley, Brad Kinyon, Don Benton, & more!

Did you know ...?

Continued on page 2

Stream Teams: Float to Win!

By Amy Meier, Stream Team Biologist

Stream Teams have traditionally struck up a likely partnership with float outfitters on our scenic Missouri streams: Teams keep the rivers clean and beautiful for others to enjoy while float outfitters offer a discount to hardworking Teams for doing so. Certainly nothing has changed in the last 12 years of the Stream Team Float Outfitters Discount Directory's existence, except that now even more outfitters have agreed to participate in the program – 111 in all for 2010! Teams should be receiving their Directories this month, and are encouraged to use the discounts by providing their Stream Team ID card to the outfitters on their favorite float streams.

In addition to the discount, the Stream Team Program is introducing a photo contest as an incentive to go forth and do good while enjoying Missouri's beautiful recreational rivers. The winner will be rewarded with their photo featured on the cover of the 2011 Stream Team Float Outfitters Discount Directory. What the Program is looking for in a winning photo will include the following:

- An "end of the day" photo featuring members of the Team that participated in a river cleanup,
- The trash that was collected on the stream, and
- The use of canoes and/or kayaks to collect trash.

We encourage Teams to contact their float outfitters and let them be involved in the cleanup. They may even have greater insight on areas in need of special attention and might provide help in other ways.

To submit a photo, please send e-mail to streamteam@mdc.mo.gov with "Photo Contest" as the e-mail heading and the following information included in the body of the message:

- Name of Photographer
- Stream Team Number of photographer and participants
- River floated/cleaned
- Float outfitter that supplied canoes (if applicable)
- Attachment of up to (3) photos only per Team, in good-resolution JPG, TIFF, or BMP formats

Prints may also be submitted to the Stream Unit at P.O. Box 180, Jefferson City, MO 65102. Photo submitters also give the Stream Team Program permission to use photos for other purposes. The contest will run until October 1, 2010, and the winner will be notified in January of 2011.

Seeking More VWQM Level 3s!

The Volunteer Water Quality Monitoring Program is looking for more Level 3 candidates. Spring is here and the weather is just right to spend a day at your site improving your skills in a relaxed atmosphere. The proficiency you will demonstrate will give your data submissions that much more validity. If you are interested in scheduling a Level 3 audit, contact Wayne Maresch at 660/438-2805 or wayne.maresch@dnr.mo.gov.

Submit your tips or questions to Sherry.Fischer@mdc.mo.gov or call 573/522-4115 x 3169.

Tips from the Teams

Q: We've worked so hard to get ready for our event, but the forecast isn't looking good; are there any recommendations on postponing or canceling?

A: Always postpone instead of canceling if at all possible! Keep in mind that no piece of data or trash is ever worth the risk of getting hurt or stranded!

However, whether or not you postpone depends a lot on the type of event and the type of weather you're experiencing. Light rain many times doesn't require a change of plans as long as there is no thunder or lightning. It will reduce your attendance but dedicated participants won't be scared away. Soaking rains or those containing thunderstorms will require you to postpone. Snow can make for a really pretty work day as long as it's not too slick or will impede the event (i.e. small trash can be easily covered or obscured by snow during litter pickups). Always dress for the weather you'll be encountering and it will keep everyone happier!

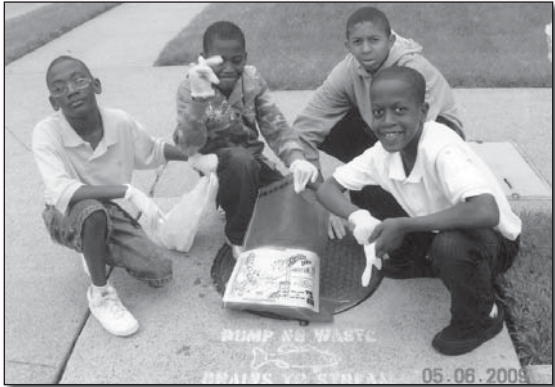
The next consideration beyond weather is river levels. Pay attention to flood warnings and check USGS gauges for real-time river level data (<http://waterdata.usgs.gov/nwis>). Even if your stream doesn't have a gauge, a nearby one probably does and you can see trends within the watershed. The sun may be shining the day of

See "Tips" continued on page 7.

... the 2010 ...

Continued on page 3

Team Snapshots



Deanna Rhinesmith's crew from Hodgen Elementary in Saint Louis County stenciled storm drains and collected trash.



The Southwest Ozarks Stream Team Association (Team 4139) recently held another successful meeting. The Joplin Globe published an article about their accomplishments and plans.



Trent Avuil of Stream Team 4072 reported collecting 17 tires, a refrigerator, an air conditioner, and other assorted trash. Whew!



Richelle Craig and her "Gia" Team (S.T. 3917) collect a huge pile of trash on their last outing in St. Francois County.

The Riffle Review

a bi-monthly glimpse of Stream Team activities

Since our last issue of Channels, Stream Team members reported:

- 838 total activities
- 100.8 tons of trash collected
- 3,817 total participants
- 396 water quality monitoring trips
- 14,706 total hours
- 5,074 trees planted

Check out more highlights below . . .

Team 57 The Southwest Missouri Fly Fishers held their annual Super Bowl Sunday litter pickup on Crane Creek in Stone County. This year, 10 youth and 5 staff from Missouri Division of Youth Services homes assisted.

Team 211 As always, Brian Waldrop with Arnold Stream Team is spreading the word about Stream Teams. Brian spoke to 150 students at Ridgewood Middle School in Jefferson County about the getting involved with the Program. Excellent!

Team 523 Show-Me Clean Streams Association is back in business in Mid-Missouri! They are recharged and ready to go! For more information, e-mail Sherry.Fischer@mdc.mo.gov.

Team 1149 Lisa LaCombe's Team has been busy planting trees on Big Deer Creek in Bates County and Burr Oak Creek in Jackson County. They planted over 700 trees in two months. Way to go!

Team 1683 The crew at Green's Canoe Rental are working hard to keep their little slice of heaven on the Meramec clean for everyone to enjoy. The employees there fill a dumpster every week collecting trash at all their put-ins and take-outs.

Team 2101 The Galloway Creek Stream Team cleaned, monitored, and took photo point monitoring photos on Galloway Creek just north of new highway interchange construction in Greene County.

Team 2975 The Mill Kids Stream Team held their 4th annual Back-to-School-Blast, the "Eleven Point River Cleanup Camp." With about 30 volunteers, the group spent two days floating and cleaning, bringing in quite a haul. Great work!

Team 3515 Walmart Market 3 Stream Team is helping to give back to their community with a habitat improvement project at the Baltimore Bottoms National Fish and Wildlife Refuge. Over 75 volunteers turned out from 13 Kansas City area Walmarts to plant 4300 cord grass plants. Fantastic!!

Team 4074 The Park Hill High School Line Creek Hoodies Stream Team conducted their first ever Stream Team event, a litter pickup. They collected 12 bags of litter from a mile stretch of Line Creek in Platte County. Congrats!

... Stream Team Float Outfitters ...

Continued on page 4

Boone County Stream Team Summit

By Sherry Fischer, Stream Team Biologist



The Stream Team Program recently partnered with the Boone County Public Works Department to host an informative gathering of local Teams. Speakers from the Department of Natural Resources, Boone County Public Works, the University of Missouri, and the Natural Resource Conservation Service provided information on impaired streams, reporting pollution, Hinkson Creek hydrology,

the county's stream buffer ordinance, and local karst topography and groundwater.

A facilitated session was also held to give Team members a chance to have input on activities and opportunities they'd like to take part in. Several Teams brought along table displays to let everyone know about their activities.

Gatherings like this are great opportunities for participants to learn and meet those working in the watersheds near them. One of the attendees stated the connections they found through Stream Team in the local community was one of their favorite things about being involved. Another said the Program helped her to "live out her ethic." Yay Stream Team!



... Discount Directory is now ...

Continued on page 7

TEAM CALENDAR

May

- 2 **Dardenne Creek Monitoring Day, St. Louis.**
Contact Darlene Haun at 636/225-3946 or e-mail Darlene.Haun@mdc.mo.gov.
- 8 **Big River Cleanup, Leadwood Big River Access, 8:00 a.m. – lunch provided.**
Contact Jerry Barton at 573/562-7590.
- 8 **Introductory Level VWQM Workshop, Columbia.**
Register online at www.mostreamteam.org. **FULL**
- 9 **Maline Creek Monitoring Day, St. Louis.**
Contact David or Mark Kuechenmeister at 314/388-1423.
- 15 **Introductory Level VWQM Workshop, Macon.**
Register online at www.mostreamteam.org.
- 22 **Introductory Level VWQM Workshop, St. Joseph.**
Register online at www.mostreamteam.org.
- 22 **Introductory Level VWQM Workshop, West Plains.**
Register online at www.mostreamteam.org.

June

- 5 **Jacks Fork Annual Cleanup, hosted by Team 713. Picnic at Eminence City Park to follow cleanup.**
Contact Pat Haviland at 417/932-4262 or e-mail jacksfork713@hotmail.com.
- 12 **Grand Glaize Watershed Monitoring, St. Louis.**
Contact Darlene Haun at 636/225-3946 or e-mail Darlene.Haun@mdc.mo.gov.
- 19 **Annual Upper Current River Cleanup—come celebrate Father's Day! Hosted by Team 1028.**
Contact Mary Ficker at 573/729-7065 or e-mail jack_maryficker@hotmail.com.
- 26 **MO River Relief, Team 1875 Cleanup, St. Joseph.**
Register at www.riverrelief.org or call 573/443-0292.
- 26 **Missouri Stream Team Watershed Coalition meeting, Jefferson City.**
For information, call Larry Cain at 314/638-9646.

For even more events,
see our online calendar
at mostreamteam.org.



Stream Team Activity Report

| Stream Team Activity 1 | Stream Team Activity 2 | Stream Team Activity 3 |
|---|---|---|
| Type of activity: (see code list at right) _____ | Type of activity: (see code list at right) _____ | Type of activity: (see code list at right) _____ |
| Activity date: _____ | Activity date: _____ | Activity date: _____ |
| Stream name: _____ | Stream name: _____ | Stream name: _____ |
| Activity county: _____ | Activity county: _____ | Activity county: _____ |
| Activity basin: _____ | Activity basin: _____ | Activity basin: _____ |
| Miles of river covered: _____ | Miles of river covered: _____ | Miles of river covered: _____ |
| Number of volunteers involved: _____ | Number of volunteers involved: _____ | Number of volunteers involved: _____ |
| Hours spent on project: _____ | Hours spent on project: _____ | Hours spent on project: _____ |
| Measurement : Please list number of monitoring trips, bags of trash collected, letters written, trees planted, events held, etc. See code list at right. | Measurement : Please list number of monitoring trips, bags of trash collected, letters written, trees planted, events held, etc. See code list at right. | Measurement : Please list number of monitoring trips, bags of trash collected, letters written, trees planted, events held, etc. See code list at right. |
| Location Description: Please provide a detailed location for your activity. (Example: 100 yds. upstream from Hwy. 63 bridge.) Include township, range, and section if possible. A good resource for maps can be found at www.digital-topo-maps.com . | Location Description: Please provide a detailed location for your activity. (Example: 100 yds. upstream from Hwy. 63 bridge.) Include township, range, and section if possible. A good resource for maps can be found at www.digital-topo-maps.com . | Location Description: Please provide a detailed location for your activity. (Example: 100 yds. upstream from Hwy. 63 bridge.) Include township, range, and section if possible. A good resource for maps can be found at www.digital-topo-maps.com . |
| _____ | _____ | _____ |
| _____ | _____ | _____ |
| _____ | _____ | _____ |
| _____ | _____ | _____ |
| Project Description: Please include as much information as you can about your activity. Include facts about the project not covered above. (Example: "Held 4th Annual litter pickup and picnic at Dry Fork Creek.") | Project Description: Please include as much information as you can about your activity. Include facts about the project not covered above. (Example: "Held 4th Annual litter pickup and picnic at Dry Fork Creek.") | Project Description: Please include as much information as you can about your activity. Include facts about the project not covered above. (Example: "Held 4th Annual litter pickup and picnic at Dry Fork Creek.") |
| _____ | _____ | _____ |
| _____ | _____ | _____ |
| _____ | _____ | _____ |

Stream Team Activity Code List

| Activity | Code | Measurement |
|------------------------------------|------|------------------------------|
| Litter pickup | LPU | Number of litter bags |
| Water quality monitoring | WQM | Number of trips |
| Pre-activity planning | PLN | Number of events |
| Stream Team meeting | MTG | Number of attendees |
| Stream workshop attended | WKS | Number of attendees |
| Education project | EDU | Number of events |
| Letter written on stream issue | LET | Number of letters |
| Article written for newspaper, etc | ART | Number of articles |
| Media contact/interview | MED | Number of interviews |
| Tree planting | PLT | Number of trees |
| Presentation to groups | PRE | Number of presentations |
| ST display at school, fair, etc. | DIS | Number of events |
| ST Inventory Guide submitted | INV | Number of inventories |
| GPS Reading NEW | TRP | Number of trips |
| Zebra mussel monitoring form | ZEB | Number of trips |
| Storm drain stenciling | SDS | Number of drains stenciled |
| Monofilament recycling project | MRP | Weight of line recycled |
| Streambank stabilization project | SSP | Number of events |
| Habitat improvement | HAI | Number of projects |
| Advocacy on stream issue | ADV | Number of hours |
| Photo Point Monitoring | PPM | Number of photos |
| Greenway development | GRE | Number of projects |
| Recruited new Team/members | REC | Number of people recruited |
| Stream Team mentoring | MEN | Team mentored & hours |
| Stream Access Maintenance | SAM | Number of litter bags/events |
| Adopt-An-Access | AAA | New Accesses Adopted |
| Forestkeepers monitoring | FOR | Number of events |
| ST Association activity | ASC | Number of hours |
| Award received | AWA | Number of awards |
| Grant applied/received | GRT | Number of projects |
| Watershed mapping | WAT | Number of trips |
| Assisted MDC fish stocking | FIS | Number of events |
| Other, please describe | OTH | Number of Projects |

Activity Prize Drawing

Prize Winners:

- ★ Elke Boyd–Columbia, MO
ST 3802–STREAMWORK
- ★ Kelly White–St. Louis, MO
ST 3553–Living Green in Watkins Creek
- ★ Matt Boyer–Mountain View, MO
ST 713–Upper Jacks Fork River Rats
- ★ Jim Nolan–Mountain View, MO
ST 713–Upper Jacks Fork River Rats
- ★ Mary Nolan–Mountain View, MO
ST 713–Upper Jacks Fork River Rats
- ★ Alex DiMercurio–St. Louis, MO
ST 1008–Twin River Rangers
- ★ Debbie Trautman–Cape Girardeau, MO
ST 4073–Lake Perry Stream Team

Prizes Won:

- ★ Pelican canoe
- ★ Dirt Devil "Kone" hand-vac
- ★ Maxcold soft-sided cooler
- ★ Stanley 16-oz. thermos
- ★ First Aid Kit
- ★ Totes-brand umbrella
- ★ Youth prize: Outside-In audio-magazine

NEXT Prize Drawing

- ★ Pelican Zest kayak
- ★ Cabela's camp light set with remote
- ★ Igloo 12-qt. cooler
- ★ Burt's Bees lip balm, body bar, lotion
- ★ Eddie Bauer water bottles with ice insert
- ★ \$15 iTunes gift card
- ★ Youth prize: Critter Keepers carry case



Please keep sending us
your Activity Reports . . .
YOU might win NEXT!

Change in Quarterly Prize Announcements

You'll notice that we've listed the prizes for the next quarter's Stream Team Activity Prize Drawing in Channels (at left). In an attempt to reduce mailing and printing, we will begin announcing the prizes in this format rather than sending a separate Streamgram.

We are all trying to make adjustments in these tight budget times and we know you will understand! Please don't relax your diligence in submitting Activity Reports; we need those to enter you in the drawing, not to mention helping to support and grow the Program!

Congratulations to all our winners. And don't give up . . . you could be next!

"Tips" continued from page 2. your event but the river you're dealing with will be based on the runoff from previous rain events.

Another high flow consideration is for cities that have combined sewer overflows. In this situation, err on the side of caution. If effluent makes up a large part of your stream discharge, keep volunteers away!

Everything presented so far holds true for litter cleanups. Situations that may vary include:

- ◆ Storm drain stenciling should only be done when the temperature is at least 50 degrees and the pavement is dry. Stenciling on days with a high probability of rain should be avoided.
- ◆ If you are planning to be in boats or canoes, especially consider the threat of thunderstorms and/or lightening because of the metal watercraft.
- ◆ Water quality monitoring becomes challenging when the temperatures are below freezing . Yes, you can get to liquid water by breaking the ice, but dissolved oxygen and temperature values may not be reliable; plus cold fingers struggle with opening reagent packets! Rain can also cause changes in oxygen and turbidity readings. If you monitor during these conditions, be sure to make a note of it on your data sheet.

Please contact us if you need more advice, we are happy to help!

Do you have ideas on information you'd like to see in Channels?

Let us know.

This is YOUR newsletter!

E-mail Sherry.Fischer@mdc.mo.gov or call 573/522-4115 x 3169.

... available just in time for Float ...

See page 8



MISSOURI STREAM TEAM
 PO BOX 180
 JEFFERSON CITY MO 65102-0180



ADDRESS SERVICE REQUESTED

PRSRT STD
 US POSTAGE PAID
 JEFFERSON CITY MO
 PERMIT 274

"Walmart" continued from page 1.

Team 4037, and from then on it has been full steam ahead! Numerous other Walmart Teams have formed throughout the state and are doing great things for local streams and the Stream Team Program by contributing donations (over \$25,000!).

After they plan their events, do their activities, and submit their Stream Team activity reports, they must also record their hours in the VAP system. This is the only way for their Stream Team volunteer hours to be recognized by Walmart and donations sent to the Stream Team Program.

Teams like #4037 do wonderful things to help their adopted streams, and by participating in the VAP program do wonderful things for all of Missouri streams. Way to go Marisa and the Walmart STaRs!

... season? If you haven't received yours already, you will SOON!

A Paddler's Guide to Missouri is Being Updated . . . Can You Help?

This detailed guide to 58 streams throughout Missouri hasn't been updated in several years. This book includes all the Ozark rivers that were featured in the Department's original canoeing guide *Ozark Waterways* by Oz Hawksley, along with some northern streams and the Missouri River. We know that many Stream Team volunteers have valuable information about the details and access points on many of these rivers. If you would like to assist in providing information, contact Joan.McKee@mdc.mo.gov. She is also looking for more rivers to feature. Refer to your own copy of the book, or Joan can send you a copy of the section of your choice. Thanks for sharing your expertise!